

PRECISION

# 5570

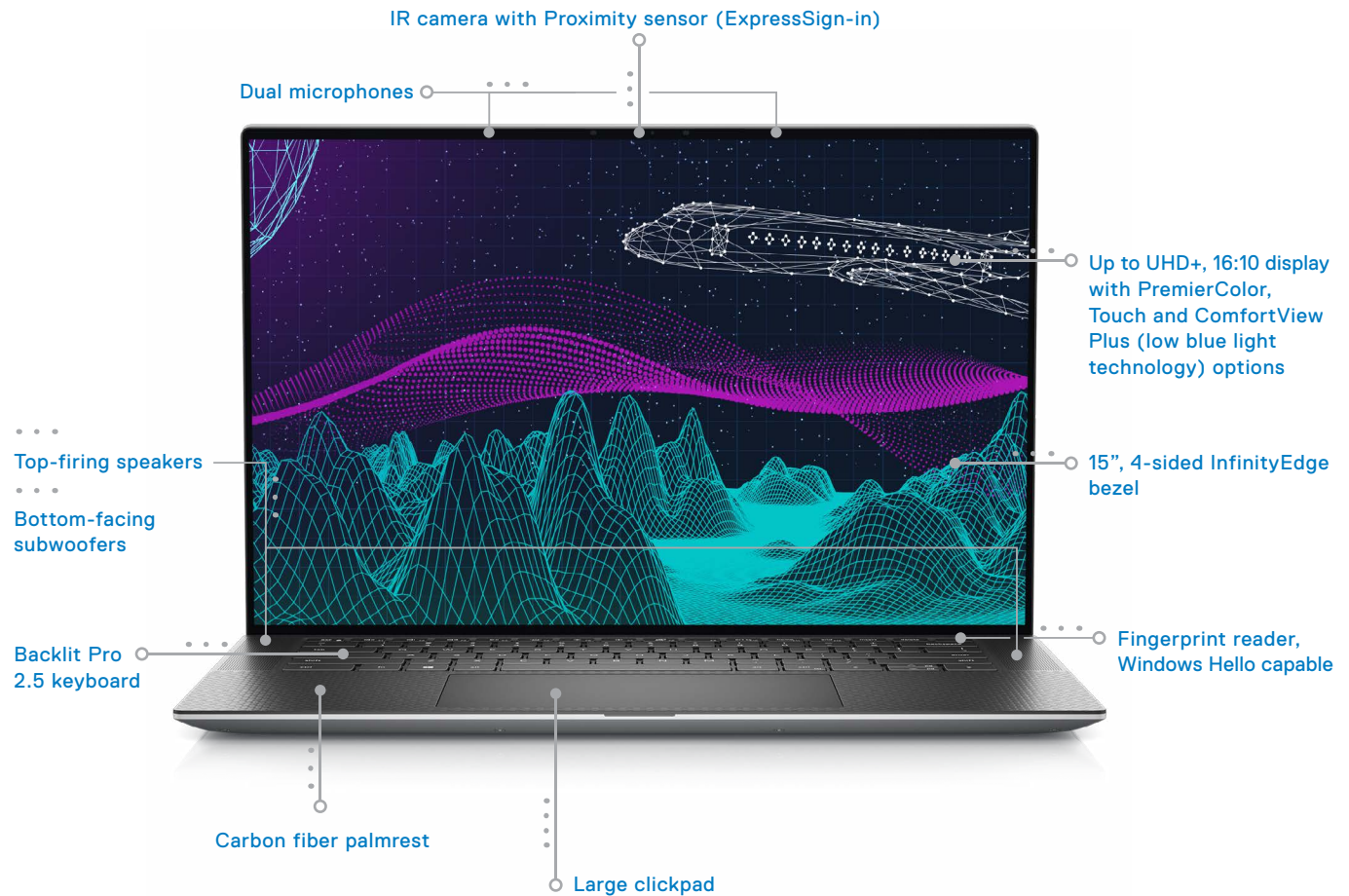
Where the  
magic happens



# 5570

Where the magic happens

The smallest & thinnest 15" workstation with AI-based optimization



- Dell Optimizer for Precision**
- ExpressSign-in
  - ExpressConnect
  - ExpressCharge
  - ExpressResponse
  - Intelligent Audio
  - Reporting & Analytics

### Advanced Thermals

*(Illustration only, not the 5570)*

- User Selectable Thermals Tables (USTT)
- Dual Opposing Output (DOO) fan with liquid polymer blades
- Dual intake venting
- Thermal insulated material, GORE™

### ISV certified

Starting at 4.06lbs / 1.84kg

[▶ Click here to view 360° product demo.](#)



# 5570



### Intelligent performance

Up to Intel Core i9, 14 Core (6P + 8E) (45W), vPro options, up to 8GB NVIDIA RTX A2000 graphics, Gen4 M.2 SSD (4TB), RAID support, up to 64GB of 4800MHz DDR5 memory, (2) Thunderbolt 4 (with power-in), Type C USB 4  
 ...  
 Dell Optimizer for Precision  
 ...  
 Advanced thermals



### Immersive productivity and design

Backlit keyboard, Large touchpad  
 ...  
 15", 16:10 InfinityEdge display, up to HDR400 UHD+, 99% DCI-P3, 500nits, PremierColor, with ComfortView Plus, Touch options  
 ...  
 Intel WiFi 6E AX211/BT5.2/vPro, Active steering antennae



### Mission critical reliability and security

ISV Certifications  
 ...  
 MIL-STD tested  
 ...  
 Long battery life with up to 6-cell battery  
 ...  
 Proximity sensor  
 Chassis intrusion sensor  
 ...  
 ProSupport - on-site service available



## Dell Optimizer for Precision We make it intelligent. You make it yours.

Dell Optimizer revolutionizes the way you work by fueling the world's most intelligent PCs\*.

It is the only AI-based optimization software that learns and responds to the way you work and designed to automatically improve application performance, battery run-time, audio settings and privacy – all in the background while you're working.

Personalized performance  
made for hybrid work



### Power to the creators

Dell Optimizer for Precision empowers high-end users with ExpressResponse<sup>6</sup> for performance optimization of storage heavy apps. If you're a Precision user, you also have an exclusive Analytics feature for workload and system insights that help create personalized performance. You can also generate reports within Analytics to get system diagnostics and productivity gains.



### Intelligent privacy anywhere

Privacy and security are a major concern – help keep sensitive data private with the world's most comprehensive suite of Intelligent Privacy features<sup>1</sup>. Onlooker detection lets you texturize or turn on Safe Screen when an intruder is detected and Look Away Detect darkens the PC screen based on user behavior.



### Extended power

ExpressCharge analyzes your power usage habits to improve PC battery utilization. It extends run times and charges your system faster when you need a boost in power.



### Enhanced audio

Intelligent Audio delivers audio and mic enhancements and reduces background noise so you can fully engage in meetings with confidence, wherever you collaborate. Neural noise cancellation enables advanced artificial intelligent techniques to distinguish human speech from any unwanted noise.



### Faster sign-in

Get to work faster with ExpressSign-in<sup>2</sup> – the proximity sensor detects your presence to wake on approach before Windows Hello logs you in via facial recognition.



### Unmatched connectivity

Optimized for the best connectivity, ExpressConnect<sup>3</sup> provides the world's first simultaneous multi-network connection for faster data and video downloads<sup>4</sup>. It also enables joining the best network<sup>5</sup> available and prioritizes traffic for conferencing apps, wherever you work.



### Improved performance

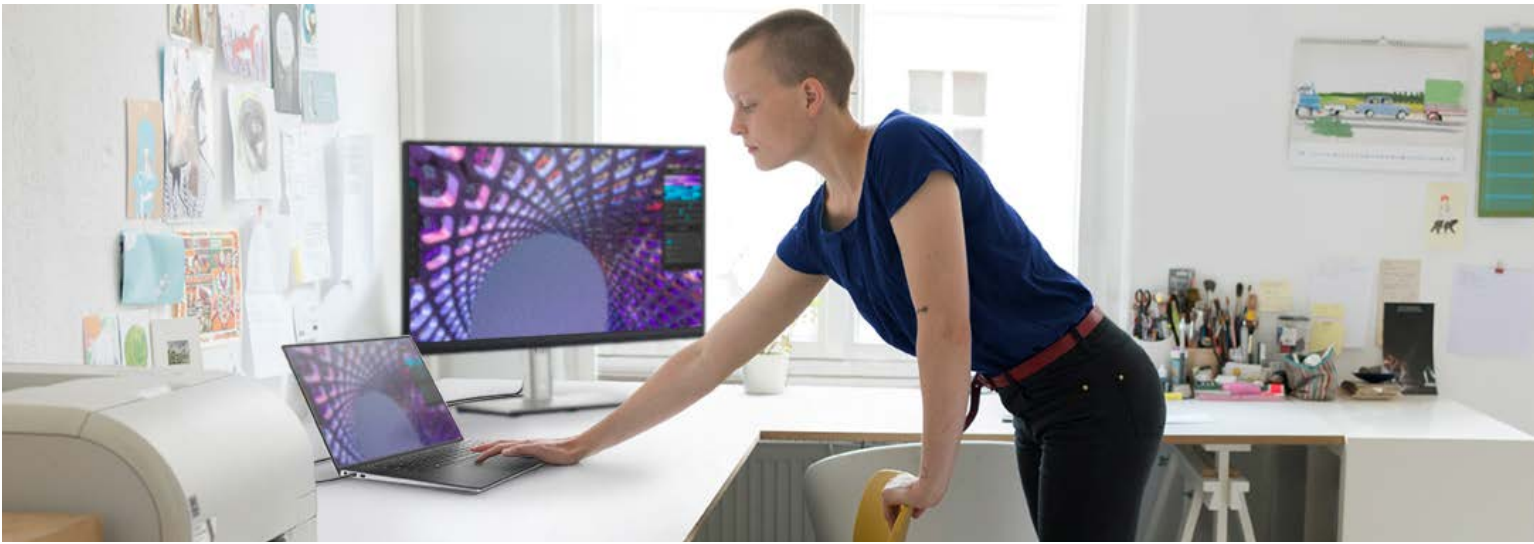
ExpressResponse<sup>6</sup> analyzes how you use your preferred apps<sup>7</sup> to boost performance.



### Simplified manageability

Elevate work experience with an easy-to-manage application that provides a seamless experience for both end-users and IT decision makers. Set up individual features and modules from Dell Optimizer that fit your work environment with the modular installation feature. Deployment updates and optimization of multiple PCs remotely can be done simultaneously via centralized management.





## RECOMMENDED ACCESSORIES



**Dell UltraSharp 34 Curved USB-C Hub Monitor - U3421WE**

Get immersive productivity on a 34" WQHD curved monitor with a wide color coverage and extensive connectivity including RJ45, USB-C and quick-access front ports.



**Dell Premier Multi-Device Wireless Keyboard and Mouse - KM7321W**

Multi-task seamlessly across 3 devices with this premium full-size keyboard and sculpted mouse combo featuring programmable shortcuts and 36 months battery life.



**Dell Thunderbolt™ Dock - WD22TB4**

Boost your PC's power on the world's first modular Thunderbolt™ dock with a future-ready design.



**Dell Premier Wireless ANC Headset - WL7022**

Collaborate with ease anywhere with this Teams certified wireless headset which offers active noise cancellation and smart sensors that automatically mute and unmute your call.



**Dell Mobile Adapter Speakerphone - MH3021P**

Multiport adapter with integrated speakerphone offers an all-in-one connectivity and conferencing solution.



**Dell Pro Hybrid Briefcase Backpack 15 - PO1521HB**

It's made with Dell's EcoLoop™ solution dyeing that generates up to 90% less wastewater, produces 62% less CO2 emissions and up to 29% less energy than traditional dyeing processes.



**Wacom Cintiq Pro 24 Creative Pen Display Touch - DTH-2420**

Enhance your creative process with the Wacom Cintiq Pro 24. Featuring world-class color performance on one of Wacom's largest 4K screens.

AT THE DESK / ON THE GO

CREATIVE ACCESSORIES

# PRECISION 5570

## FEATURE TECHNICAL SPECIFICATION

<b>MODEL NUMBER</b>	Precision 5570
<b>PROCESSOR OPTIONS</b>	Intel® Core i9-12900HK, 24MB, 14 Cores, 2.50GHz Intel® Core i9-12900H, 24MB, 14 Cores, 2.50GHz, vPro Intel® Core i7-12800H, 24MB, 14 Cores, 2.40GHz, vPro Intel® Core i7-12700H, 24MB, 14 Cores, 2.30GHz Intel® Core i5-12600H, 18MB, 12 Cores, 2.70GHz, vPro Intel® Core i5-12500H, 18MB, 12 Cores, 2.50GHz
<b>OPERATING SYSTEM</b>	Windows 11 Home, 64-bit Windows 11 Pro, 64-bit Win 11 Pro DGR Ubuntu 20.04 RHEL
<b>MEMORY OPTIONS</b>	8GB, 1 x 8GB, DDR5, 4800MHz, single-channel 16GB, 2 x 8GB, DDR5, 4800MHz, dual-channel 32GB, 2 x 16GB, DDR5, 4800MHz, dual-channel 64GB, 2 x 32GB, DDR5, 4800MHz, dual-channel
<b>GRAPHIC CARDS</b>	NVIDIA® RTX™ A1000 Laptop, 4GB, GDDR6 NVIDIA® RTX™ A2000 Laptop, 8GB, GDDR6
<b>INTEGRATED VIDEO CONTROLLER</b>	Intel® Iris® Xe Graphics, USB Type-C port with DisplayPort Alt mode and Thunderbolt 4, Shared system memory, 12th Generation Intel Core i5/i7/i9
<b>STORAGE OPTIONS</b>	M.2 2230, 256GB, PCIe NVMe Gen4 x4, Class 35 SSD M.2 2280, 512 GB, PCIe NVMe Gen4 x4, Class 40 SSD M.2 2280, 1TB, PCIe NVMe Gen4 x4, Class 40 SSD M.2 2280, 2TB, PCIe NVMe Gen4 x4, Class 40 SSD M.2 2280, 4TB, PCIe NVMe Gen4 x4, Class 40 SSD M.2 2280, 512GB, PCIe NVMe Gen4 x4, Class 40 SSD, self-encrypting drive M.2 2280, 1TB, PCIe NVMe Gen4 x4, Class 40 SSD, self-encrypting drive
<b>MEDIA-CARD READER</b>	Secure Digital (SD) Secure Digital High Capacity (SDHC) Secure Digital Extended Capacity (SDXC)
<b>FINGERPRINT READER</b>	Sensor resolution: 500DPI
<b>DIMENSIONS &amp; WEIGHT</b>	Front: 7.7mm, (.30in) Rear: 11.65mm, (0.46in) Width: 344.4mm, (13.6in) Depth: 230.3mm, (9in) Weight (maximum): 2.1kg, (4.6lbs) Weight (minimum): 1.88kg, (4.1lbs)
<b>TOUCHPAD</b>	Resolution: Horizontal 1770, Vertical 1039 Dimensions: Horizontal 150.9mm, Vertical 90mm
<b>AUDIO</b>	4 Channel High Definition Audio Realtek ALC3281 Supported stereo conversion High definition audio interface Universal Audio Jack 2 Speakers Supported internal speaker amplifier Keyboard shortcut controls Tweeters (2 x 2W); Woofers (2 x 2W) 2.5W x 4 = 10W Supported subwoofer output Digital-array microphones
<b>WIRELESS</b>	Intel® AX211, 2x2 MIMO, 2400 Mbps, 2.40GHz/5GHz Wi-Fi 802.11a/b/g Wi-Fi 4 (WiFi 802.11n) Wi-Fi 5 (WiFi 802.11ac) Wi-Fi 6 (802.11ax) Wi-Fi 6E (802.11ax) 64-bit/128-bit WEP AES-CCMP TKIP Bluetooth® 5.2
<b>BATTERY OPTIONS</b>	3-cell, 56 Wh "smart" lithium-ion, 13.2V, 0.255kg, Height: 7.56mm Width: 77.7mm Depth: 295.2mm 2hr (Express charge), 3hr (Standard charge) 1 year/300 cycles, Supported ExpressCharge  6-cell, 86 Wh "smart" lithium-ion, 13.2V or 13.35V, 0.340kg, Height: 7.56mm Width: 77.7mm Depth: 295.2mm 2hr (Express charge), 3hr (Standard charge) 1 year/300 cycles, Supported ExpressCharge

## FEATURE TECHNICAL SPECIFICATION

<b>DISPLAY OPTIONS</b>	Full High Definition (FHD+), Non-Touch Wide Viewing Angle (WVA) 500 nits Native resolution: 1920 x 1200 2.3 Megapixels sRGB 100% 145 PPI Contrast ratio (minimum): 1650:1 (typical) Response time (maximum): 35ms Refresh rate: 60Hz Horizontal viewing angle: +/- 89 degrees Vertical viewing angle: +/- 89 degrees Pixel pitch: 0.1752mm Anti-glare  WLED UHD+ Touch Wide Viewing Angle (WVA) 500 nits Native resolution: 3840 x 2400 9.2 Megapixels 100% AdobeRGB, 99% DCI-P3 290 PPI Contrast ratio (minimum): 1600:1 (typical) Response time (maximum): 35ms Refresh rate: 60Hz Horizontal viewing angle: +/- 89 degrees Vertical viewing angle: +/- 89 degrees Pixel pitch: 0.0876mm Anti-reflective Touch support, with 10 touch points
<b>KEYBOARD</b>	Standard Backlit, spill resistant keyboard
<b>POWER OPTIONS</b>	90W UMA Height: 22mm Width: 66mm Depth: 130mm Input voltage (maximum): 240VAC Input voltage (minimum): 100VAC Input frequency maximum: 60Hz Input frequency (minimum): 50Hz Input current (maximum): 1.5A Output current (continuous) 4.5A Rated Output Voltage: 20VDC  130W Discrete & UMA Height: 22mm Width: 66mm Depth: 130mm Input voltage (maximum): 240VAC Input voltage (minimum): 100VAC Input frequency maximum: 60Hz Input frequency (minimum): 50Hz Input current (maximum): 1.8A Output current (continuous) 6.5A Rated Output Voltage: 20VDC
<b>CAMERA</b>	HD RGB Camera, front location, CMOS-sensor technology, Resolution (RGB): 0.92 megapixel, 1280 x 720 (HD) at 30 fps Resolution (Infrared): 0.20 megapixel, 576 x 360 at 15 fps Diagonal Viewing angle (RGB): 78.50 degrees Diagonal Viewing angle (Infrared): 78.50 degrees
<b>PORTS AND SLOTS</b>	(2) ThunderBolt™ 4 ports with PowerDelivery USB Type-C™/ Display port alt Universal audio jack SD-card slot Wedge-shaped lock slot  Also ships with USB 3.2 Type-A and HDMI dongle

# 5570

Sustainability on Dell Precision workstations

Leading the industry in sustainable practices in our products, packaging and supply chain.

## PRECISION LEADS THE WORKSTATION INDUSTRY IN SUSTAINABLE DESIGN AND MATERIALS.



### Design

# 1st

Workstations made with reclaimed carbon fiber and renewable bioplastic<sup>13</sup>.

### Sustainable Materials

# up to 46%

Recycled plastic in fixed workstations. Up to 17% in mobile workstations.

### Packaging Innovation

# 25%

Ocean-bound plastic trays in Precision 5000 Series packaging.

## PRECISION HAS

# 19

EPEAT registered products<sup>14</sup>



# 16

TCO 8 certified configurations



# 8.0

ENERGY STAR<sup>®</sup> throughout the portfolio



\* Based on internal analysis, April 2021. Dell Optimizer available in 2020 devices, not available in OptiPlex 3000 series, Latitude 3310 2-in-1 and Latitude Chromebook Enterprise. Feature availability and functionality varies by model.

1 Based on Dell internal analysis of competitive PC performance software and applications. September 2021. Intelligent Privacy is available on select Dell systems and devices.

2 Available on Latitude 9000 and select 7000 series; Precision mobile workstations 7000 and select 5000 series. See product details for availability.

3 ExpressConnect available with Dell Optimizer software version 2.0 and onwards. Download the latest at <https://www.dell.com/support/home>.

4 Disclaimer: Simultaneous multi-network connection (or Connection based teaming) is a new connectivity feature under ExpressConnect. It simultaneously sends and receives data and video traffic using two or more wired or wireless connections. Based on Dell internal analysis.

5 Best network selection based on signal strength, channel congestion, router type and others. Network suggestions based on user credentials.

6 ExpressResponse must be enabled in the Applications feature. DO learns how user uses the selected application(s) over several hours. Based on Dell testing using Sysmark 2018 benchmark on a Latitude system running productivity applications; and using performance evaluation benchmarks on Precision mobile workstations running ISV applications, March 2020. Improvement will vary based on product configuration, use, application and other factors

7 User must input preferred apps first in order for them to be analyzed.

8 Based on a Forrester Study commissioned by Dell Technologies and Intel: "The Total Economic Impact of Dell's PC as a Service", November 2020 <https://www.delltechnologies.com/asset/en-us/solutions/business-solutions/industry-market/forrester-the-total-economic-impact-of-dells-pc-as-a-service.pdf>

9 Based on a Forrester Total Economic Impact™ Study commissioned by VMware, "The Total Economic Impact™ of VMware Workspace ONE for Windows 10", September 2018. Results from interviews with VMware Workspace ONE customers and/or based on a 12,000-employee composite organization.

10 Based on a Principled Technologies test report, "Spend Less Time and Effort Troubleshooting Laptop Hardware Failures" dated April 2018. Testing commissioned by Dell, conducted in the United States. Actual results will vary. Full report: <http://facts.pt/L52XKM>

11 Based on Principled Technologies Report commissioned by Dell Technologies, "Deliver pre-configured systems to end users faster with Dell Provisioning for VMware Workspace ONE", January 2019, comparing deployment using Dell Provisioning for Workspace ONE vs. traditional deployment. Results extrapolated to deployment of 1000 systems, a week represents seven full workdays. Actual results will vary.

12 Based on Dell Internal analysis, January 2019.

13 Based on Dell analysis, Jan 2021. 21% bioplastics in LCD coverlid.

14 EPEAT registered where applicable. EPEAT registration varies by country. See [www.epeat.net](http://www.epeat.net) for registration status by country.